



WELTON OWNERS CLUB

NEWSLETTER

December 2020

MUTTERINGS FROM YOUR CHAIRMAN.

At the end of the 2020 season, truncated at both ends, we must be grateful for what we have managed to achieve as a club in the face of the world's current problems. We began rallying as soon as we were able, spending July in Somerset, August in Wiltshire and in Norfolk, then September brought a rather strange AGM in Shropshire, followed in October by what turned out to be our last outing in Herefordshire. We instituted our own sanitising measures, we kept our distance between people and pitches, and I am delighted to report that all of us remained safe and healthy.

For those members who chose for health reasons not to rally this year, we hope to see you in 2021, when we look forward to returning to a semblance of normality and a full season. Speaking of which, you will see in your 2021 rally book come through the letter box that David has added a November rally in response to a number of requests. This is timed to coincide with the seals giving birth on the Lincolnshire coast, and it really is a special place and an event not to be missed.

With long winter evenings ahead, let's get those plans for summer made and those booking slips filled in. We all need something to look forward to, and 2021 is not far away.

It just remains for me to wish everyone a safe and enjoyable Christmas, and a Happy New Year.

See you in March.

Jean Yates

Chairman

Lloyds Bank have changed their rules and we now have to write all cheques out in full. So, no cheques can be accepted unless made out to "Welton Owners Club"
Thank You

It is time to renew your membership. Please can you send your £10 renewal fee to Tracy Totman. You can also pay your membership by BACs to make things easier. Welton Account is as follows: -

Tracy will send you your membership card. Please make sure that you make all cheques payable to **Welton Owners Club** Tracy's address is in the rally book.

The Rally Book has gone to print but unfortunately due to the current Covid 19 restrictions we are not sure when we will receive them. As soon as they become available, they will be posted out to you. The rally programme will be added on to the end of this newsletter to help people out with planning next year. Let's hope it's better than this year. Look forward to seeing you all next year.

RALLY REPORTS.

AGM Rally held at Wharf Tavern, Goldstone, Shropshire. 20th September to 4th October.

Driving along the A14, I received a text saying, “We can see you”. Being such a large unit I am sure we are not missed easily, but Pat and Dave had joined the A14 from the M11 and found themselves behind us, so we completed the journey to The Wharf Tavern in Convoy along with a couple of piddle stops.

The road down to the site was not too bad, but some ralliers found themselves on the wrong roads and ended up having a hair-raising journey for the last few miles. We arrived to be greeted by a grinning Jean and her cousin John who was joining the club again after several years of not rallying with the Welton’s.



The field was across the road from the pub and right beside the canal which was great for walking even if it was a tad muddy. There was a total of 14 vans attended the rally, the weather was very mixed with some heavy rain but also some sunshine which allowed us to sit outside and have a drink. Shorts were still being worn by many of us. We were all on hard standing, so all was well. Lots to do and see in the area, although we were somewhat curtailed as many places were closed due to Covid 19.

Many of us visited Attingham Hall, National Trust, although the house was closed the walks around the grounds were lovely. Market Drayton, Newport, Ellesmere Port, Iron Bridge and the Air Museum at Cosford where some of the places that were visited.

The AGM was held in a most unusual way as we could not have a meeting due to the Corona virus rules. We handed out the officer’s reports and rally programme in packs to each caravan in the morning. In the afternoon, Jean, Chairman, Tracy Secretary, Pat Treasurer and David Rally

Secretary sat in a socially distanced line which allowed members to come forward to raise any issues they had and to ask any questions. They also came forward to propose and second the reports. We also held a raffle as usual but again we had to be Covid friendly. Lots of wipes and sterigel. I am sure by the end of this we will have absorbed so much alcohol through our hands that our livers will be pickled!!!

It appeared to go well, and everyone seemed happy with the way the AGM was conducted.



Waiting for the members.

The pub was very Covid friendly with strict rules about social distancing and hand cleansing so most of us ate in the pub at some time during the rally, but an all get together meal was not an option which was a great shame. We also had to refrain from tea and coffee, and any get togethers as the rule was no more than six in a group. We long for the days when we can all get to have a cup of tea together again.

We all enjoyed the site very much, and thanks to Jean for taking the lead here. 7 vans then moved on to the follow-on rally at Pembridge in Herefordshire.

Tracy Totman

Follow on to

Townsend Farm, Pembridge Herefordshire.

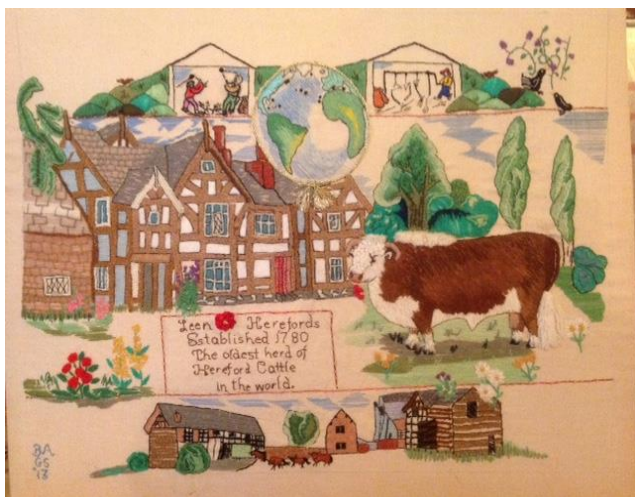
4th to 18th October.

The rally Officers were Dennis and Janet Harris who greeted each of the seven units on arrival. The site was about as good as you will get with every pitch having its own electric hook up, fresh water supply and wastewater disposal drain next to the hard standing.

It was just as well that we had hard standing as the weather could have been better. However, because of COVID no get togethers of any kind could take place so the rain did little to spoil the rally. Dennis was able to arrange a fish and chip evening with the food provided by a local pub and eaten in our vans. Dennis was a good contact point between the ralliers and the local pub for booking tables and the steak night was very popular with all of us attending but booking in small groups. The was very enjoyable.

There were lots of interesting places to visit including two National Trust properties at Berrington Hall and Croft Castle. The buildings were open at both locations and the parkland walks were very relaxing. Unfortunately, the Monkland Cheese Dairy was not open to visitors, but the tearooms provided refreshments and you could buy cheese from the shop.

The Church at Pembridge was open and displayed a number of tapestries illustrating the history of the village from Doomsday to the modern era.



Also open was the Oakchurch Farm shop at Staunton on Wye, which has an enormous display of farm produce etc.

The area is well known for the Black and White Village Trail which takes in a dozen or so villages which contain a number of old properties painted black and white. Some are pubs, some are shops, but most are private dwellings. Most of us on the rally enjoyed a visit to these villages.



This was the first rally that Dennis and Janet have marshalled for the Welton's. From all of us
Thank You.

Dave and Pat Vigors.

Unfortunately, due to lock down again we were
unable to run the Kent rally for Christmas markets. It
has been rebooked for 2022.



THE OFFICERS AND COMMITTEE WOULD LIKE TO
WISH YOU ALL A MERRY CHRISTMAS AND A HAPPY
AND PROPEROUS 2021
LOOKING FORWARD TO SEEING YOU ON THE RALLY
FIELD SOON. (Hopefully)

Rally Programme for 2021

Dates	Rally	Price	Rally officers
28/03/21 to 11/04/21 (Easter)	The Lawns, Near Spalding	£16 a night inc. EHU	Pat & Dave Vigors
28/04/21 to 08/05/21 Early BH Follow on to	Home Farm, Blue Anchor, Somerset	£9 no EHU	Chris & Maggie Sanderson
08/05/21 to 22/05/21	Porth Beach, Near Newquay Cornwall	£13 a night inc EHU max 18 units, should be over £30 a night	Marion & Kenny Clow
28/05/21 to 06/06/21 Whit week BH	The Rose Pub, Shotley Suffolk	£10 a night not EHU	Gail & Richard Haste
13/06/21 to 27/06/21 (Ladies rowing week)	Swiss Farm, Henley on Thames	£10.50 a night no EHU	Jean Yates & John Tyler
11/07/21 to 25/07/21	Newsholme Manor Keighley W. Yorks	£8 a night + £5 for EHU 9 hook ups field holds 20	Tracy & David Totman
25/07/21 to 08/08/21 Working Farm	Humblescough Farm Nateby Lancs.	£18 a night inc EHU plus all facilities.	Tracy & David Totman
05/09/21 to 19/09/21 Follow on to AGM	Lyndon Top, Rutland Water	£9 a night no EHU	Gail & Richard Haste
19/09/21 to 03/10/21 AGM meeting 25/9/21	The Angel Inn, Larling, Norfolk	£15 a night inc EHU and showers and toilet.	Jean Yates
18/10/21 to 28/10/21	Barnstones Caravan Park Near Banbury Oxford.	£13 a night inc EHU full facilities	Pat and Dave Vigors
14/011/21 to 21/11/21 Baby Seal watching at Donna Nook Must have 10 VANS	Lakeside Touring Park North Sommercotes Lincs	£17 a night fully serviced pitches, nice club house, good food. swimming pool.	Tracy and David Totman



Tracy Totman

Hon Secretary Welton Owners Club